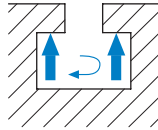
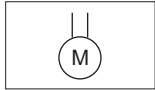


Application area

- For medium and larger presses
- For clamping upper dies
- For dies or adapter plate with identical dimensions or U-recesses
- Stationary installation on the slide edge

Mode of operation

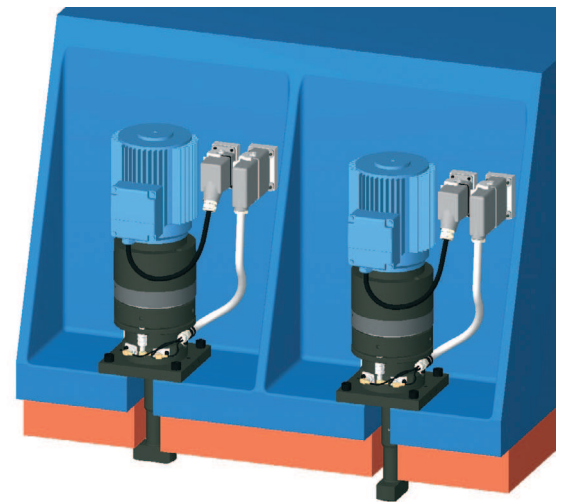


- An electric motor with gear drive provides the clamping force.
- During the clamping and unclamping movement the tie rod is turned through 90°.

Description

By means of a gear drive an electric motor causes a spindle to rotate. Through this a nut and the tie rod connected to it move up and down.

The rotation movement of the tie rod is effected by a friction element. Energy is only required during the processes of clamping and unclamping. The clamp unit is mechanically self-locking. The clamping force is continuously monitored.



Advantages

- Mechanically self-locking
- Electric monitoring of all functions
- Fully automated operation
- Large clamping dimension tolerance
- Continuous clamping force monitoring

Accessories

- Limit switches/cables
- Plug connectors

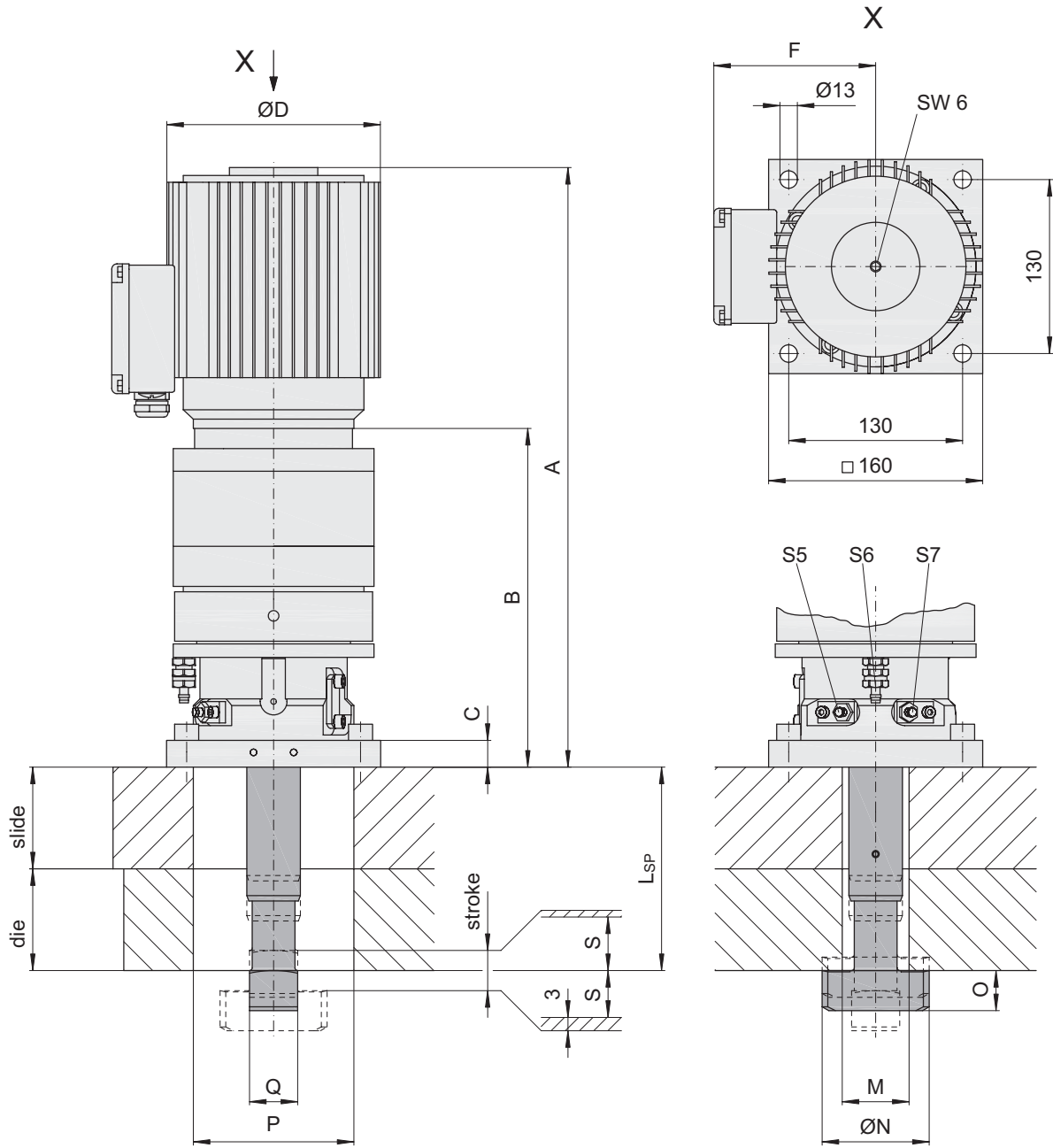


Technical Data

Type	ED 60	ED 120	ED 240
Clamping force [kN]	60	120	240
Max. loading force [kN] ¹⁾	100	200	400
Clamping dimension tolerance [mm]	+/- 7		
Stroke [mm]	18		
Clamping speed [mm/s]	3		
Motor: Type Supply voltage	three-phase 400V		
Limit switches: Number / Type Supply voltage Connection type Designation	<ul style="list-style-type: none"> • Three inductive proximity switches • PNP normally open ; 10-30 V DC • Plug-in type (M8x1) • Tie rod in clamping position S5 • Continuous clamping force monitoring S6 • Tie rod in unclamping position S7 		
Max. operating temperature [°C]	70		
Weight [Kg]	33	36	45

¹⁾ Mechanical damage may occur at higher loads.

Fixing is achieved with four screws M12, DIN 912 strength class 8.8 (not included).



Technical specifications are subject to change without notice!

(Custom designs available on request)

L_{SP} = Nominal clamping dimension [mm]

Type	stroke	S	A	B	C	ØD	F	M		ØN	O	P	Q	L _{SP} min.
								min.	max.					
ED 60	18	7	433	253	20	150	102	45	50	80	30	90	36	105
ED 120	18	7	448	253	20	160	123	50	60	98	45	120	42	105
ED 240	18	7	492	297	20	160	123	65	70	120	60	160	62	130

Example order

EDH 120 - 150

Type _____

L_{SP} _____