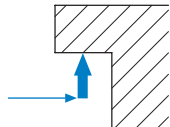
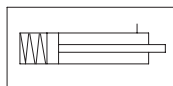


## Application area

- For medium and large presses
- For various die dimensions
- For clamping upper dies
- For dies with U-recesses and standardised clamping dimensions
- Suitable for retrofitting

## Mode of operation



- The electric positioning unit moves the spring clamp unit along the T-slot.
- A single-acting spring clamp cylinder generates the clamping force.
- Unclamping of the spring clamp units is effected hydraulically.

## Description

The electric positioning unit moves the spring clamp unit by means of a chain. For clamping, the clamp unit is depressurized so that the springs generate the clamping force.

Hydraulic pressure is required for unclamping respectively positioning of the clamp units.

Therefore, pressure control by means of a pressure switch on the hydraulic power pack is necessary.

The electric positioning units may be switched off individually by the machine control so that these clamp units remain in their park position, where they are clamped.



## Advantages

- Clamping of different die sizes
- Short clamping time
- Clamping force is generated mechanically by springs
- Displacement path up to 1000 mm available
- All important functions electrically monitored
- High automation level
- Central operation

## Accessories and fittings

- Pilot controlled check valves
- Screw joints
- Hydraulic hoses / hydraulic accessories
- Hydraulic power packs
- Limit switches / cable
- Plug connectors

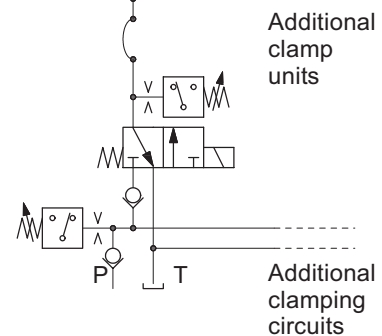
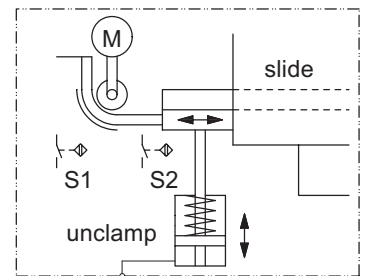
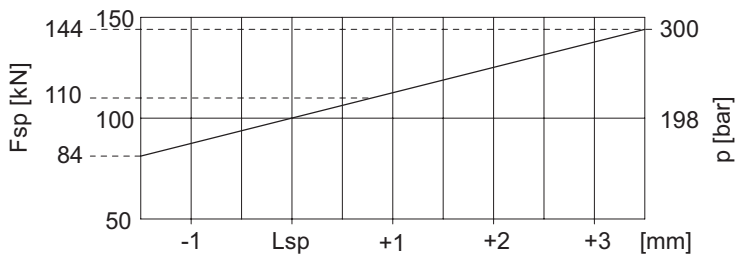
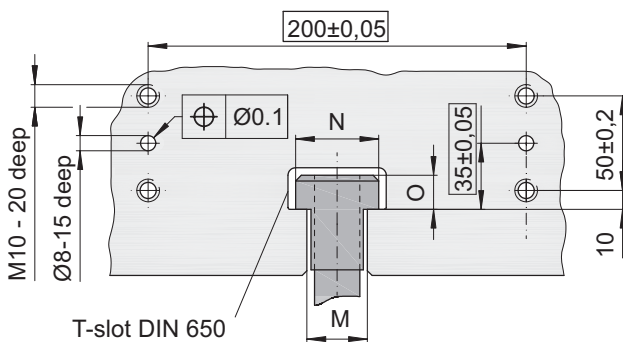
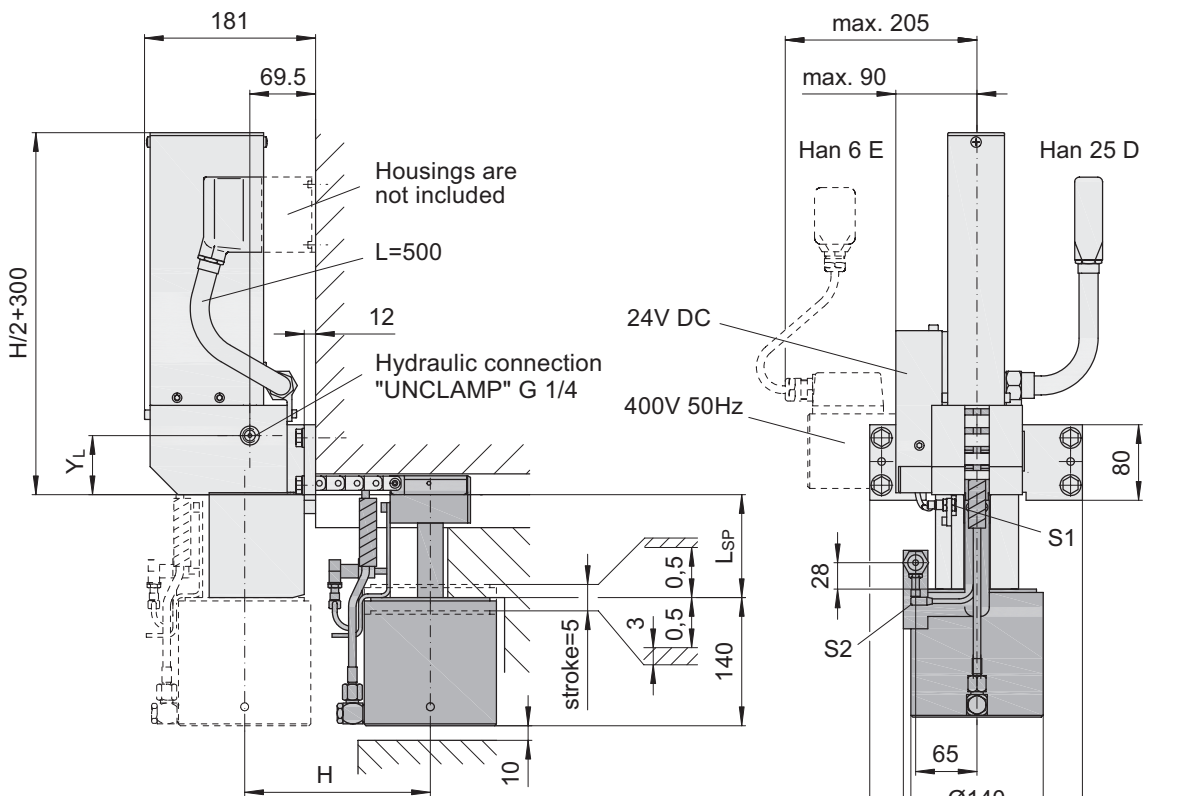


Fixing is achieved with four hexagon head screws with flange (DIN 6921), M10x30, strength class 10.9 and two spring dowel pins Ø8x20 (not included).

## Technical Data

Positioning Unit	EVK		
Motor: Type	DC	alternatively	three-phase
Supply voltage	24V		400V 50 Hz
Motor power [W]	8		25
Positioning speed [mm/s]	150		145
Limit switches: Type	• Inductive proximity switches		
Switch voltage	• PNP normally open ; 10-30 V DC		
Designation		• Clamp unit in park position	S1
		• Clamp unit at the die	S2
		• End of displacement path (optional)	S5
Plug connector	Han 25 D Han 6 E (additionally for three-phase drive)		
Clamp Unit		ZSF 100	
Clamping force [kN]	100		
Max. loading force [kN] <sup>1)</sup>	130		
Clamping dimension tolerance [mm]	+/- 0,5		
Stroke [mm]	5		
Unclamp pressure/max. unclamp pressure [bar]	320 / 350		
Oil volume: Unclamp [cm <sup>3</sup> ]	20		
Max. operating temperature [°C]	70		
Weight [kg]	23		

<sup>1)</sup> Mechanical damage may occur at higher load.



**Example order** EVK - 400V 50 Hz - 700 - S5 - ZSF100 - 28 - 75

- Positioning unit \_\_\_\_\_
- Supply voltage \_\_\_\_\_
- Displacement path (H) \_\_\_\_\_
- Limit switch (optional) \_\_\_\_\_
- Clamp Unit \_\_\_\_\_
- T-slot \_\_\_\_\_
- Clamping dimension  $L_{SP}$  \_\_\_\_\_

T-slot	M	N	O	$Y_L$
28	28	44	18	62,5
32	32	50	20	64,5
36	36	54	22	66,5

(Custom designs available on request)