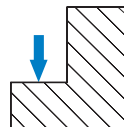
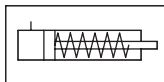


Application area

- For small to medium presses
- For dies with straight clamping edges
- For clamping lower die
- Fixed installation on press bed
- Especially recommendable for retrofitting

Mode of operation



- Several single-acting hydraulic cylinders transfer the required clamping force to the die.
- The unclamping procedure is initiated by switching over the hydraulic valve by means of a return spring.

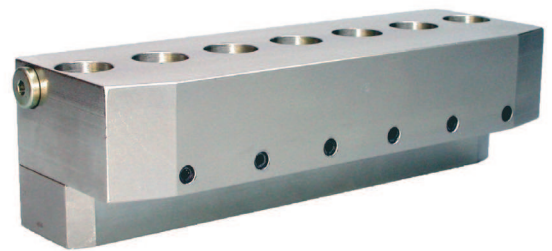
Description

The hydraulically driven clamping ledge creates the required clamping force directly. In order to secure the clamping force, hydraulic pressure must be maintained (e.g. with pilot-controlled check valves).

Pressure sensing by the pressure switch on the hydraulic power pack is required.

The clamping ledge is installed on a base plate. The basic versions of these plates are either 30 or 35 mm high and are available in two standard lengths and a variable length (additional heights available on request). Moreover a surface hardened version of these plates is available which can be used for lateral guiding of the dies.

The hydraulic line connections can be made either to the side or back as per requirements.

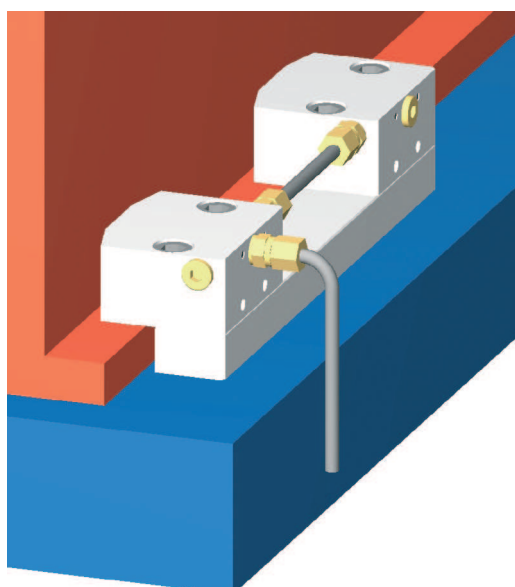


Advantages

- Fully automatic operation
- Large clamping dimension tolerance
- Minimal installation investment
- Central operation
- Continuous clamping force monitoring possible (pressure sensing)
- Maintenance free
- Corrosion protected
- Simple operation
- Especially suitable for retrofitting

Accessories

- Check valves
- Screw connections
- Hydraulic hoses / Hydraulic accessories
- Hydraulic power packs

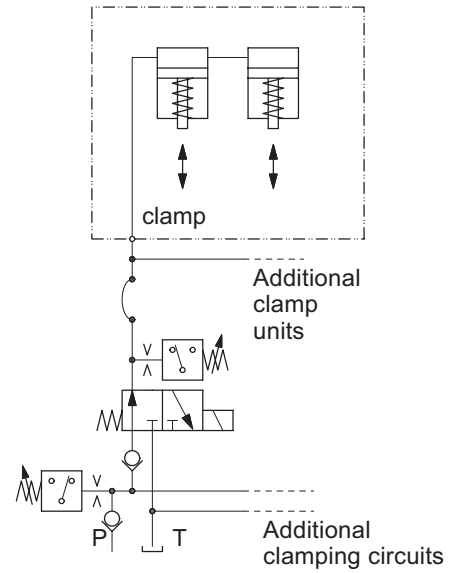
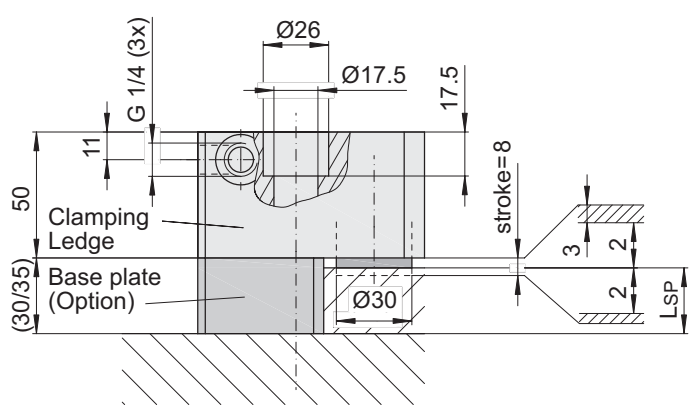
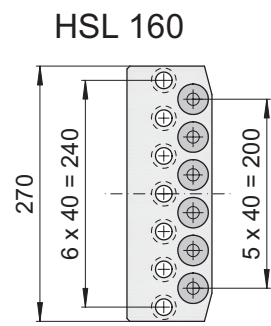
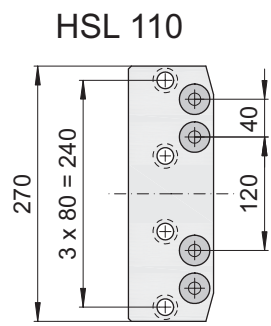
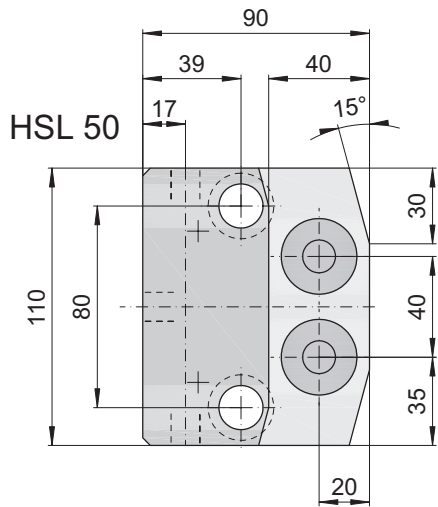


Technical data

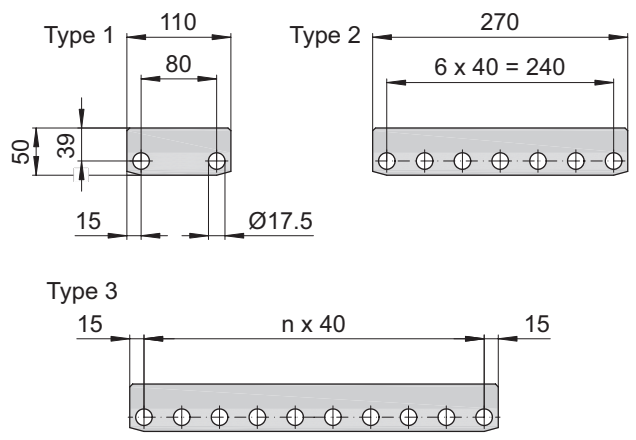
Type	HSL 50	HSL 110	HSL 160
Clamping force [kN] / at operating pressure [bar]	56 / 400	112 / 400	168 / 400
Max. loading force [kN] ¹⁾	70	140	210
Max. operating pressure [bar]	400		
Clamping dimension tolerance [mm]	+/- 2		
Stroke [mm]	8		
Oil volumes: Clamp [cm ³]	11.2	22.4	33.6
Max. operating temperature [°C]	135		
Weight [kg]	3.1	7.6	7.5

¹⁾ Mechanical damage may occur at higher loads.

Fixing is achieved with four screws, M16, strength class 10.9 (not included).



Base plates (optional):



Example order

Clamping Ledge **HSL 110**
Base plate **T3 - 30 - 8**

Type of base plate _____
L_{SP} (standard 25 or 30) _____
n (max=25, only type 3) _____

L_{SP} = Nominal clamping dimension [mm]
n = Number of bores

(Custom designs available on request)

Technical specifications are subject to change without notice!